



ASIAN JOURNAL OF INNOVATIVE RESEARCH

Available online at <http://www.asianjir.com>

Received 28 Nov. 2016;
Accepted 20 Decem. 2016
Online December 2016

Research Article

Zoology

Identification of Insecticidal compounds in *Saraca asoca* Bark Extract Using Gas Chromatography and Mass Spectroscopic Technique

S. Gomathy and K.M. Subbu Rathinam*

S. Gomathi, Research Scholar, Department of Zoology, Rajah Serfoji Government College, (Autonomous), Thanjavur, Tamil Nadu, S. India

ABSTRACT

To identify the insecticidal components of *Saraca asoca* bark were evaluated by standard protocol using the equipment Perkin-Elmer Gas Chromatography–Mass Spectrometry. The mass spectrum of the compounds found in the extract was matched with the National Institute of Standards and Technology (NIST) library. The GC-MS analysis revealed the presence of various compounds like 1-Butyl (dimethyl) silyloxypropane, 1,2,3-Benzenetriol, Squalene, Phenol, 3,4,5-trimethoxy, Hexadecanoic acid, methyl ester, Hexadecanoic acid, methyl ester, Stigmast-5-en-3-OL, (3.β.) and 7-Methoxy-2,3,6-Triazaphenothiazin-1(2H)-one in the ethanolic extract of *Saraca asoca*. Among the various compounds, 1,2,3-Benzenetriol, Squalene, phenol and 7-Methoxy-2,3,6-Triazaphenothiazin-1(2H)-one identified as insecticidal activity using NIST library. These findings support the use of *Saraca asoca* as insecticidal plant.

Keywords: Gas chromatography and Mass spectroscopy, *Saraca asoca*, Phytocompounds

Citation: Gomath S iand K.M. Subbu Rathinam (2016). Identification of Insecticidal compounds in *Saraca asoca* bark extract using gas chromatography and mass spectroscopic technique. Asian Journal of Innovative Research 1(4): 23-28.

*Corresponding author
Dr. K.M. Subbu Rathinam,
Assistant Professor,
Department of Zoology,
Rajah Serfoji
Government College,
(Autonomous),
Thanjavur, Tamil Nadu,
S. India

INTRODUCTION

Food grain losses due to insect infestation during storage are a serious problem, particularly in the developing countries (Talukder *et al.*, 2004). Losses caused by insects include not only the direct consumption of kernels, but also accumulation of exuviae, webbing and cadavers. High levels of the insect detritus may result in grain that is unfit for human consumption and loss of the food commodities, both, in terms of quality and quantity. Plants are a rich source of secondary metabolites with interesting insecticidal activities (Dubey *et al.*, 2008; de-Fátima *et al.*, 2006). Different medicinal plants and their medicinal values are widely used for various ailments throughout the world. Various chemical compounds isolated and characterized from Boraginaceous plant species are described. Distinguished examples of these compounds include flavonoids, phenols and phenolic glycosides, saponins and cyanogenic glycosides (Shahidi, 2000 and Shahidi, *et*

al., 2008; Meurer-Grimes *et al.*, 1996).

It has been shown that *in vitro* screening methods could provide the needed preliminary observations necessary to select crude plant extracts with potentially useful properties for further chemical and pharmacological investigations (Mathekaga and Meyer, 1998).

Within a decade, there were a number of dramatic advances in analytical techniques including FTIR, UV, NMR and GC- MS that were powerful tools for separation, identification and structural determination of phytochemicals. Gas Chromatography Mass Spectroscopy, a hyphenated system which is a very compatible technique and the most commonly used technique for the identification and quantification purpose. The unknown organic compounds in a complex mixture can be determined by interpretation and also by matching the spectra with reference spectra (Ronald Hites, 1997). The aim of this study is to identify the insecticidal compounds present in *Saraca asoca* (Family: Caesalpiniaceae) bark extract with the aid of GC- MS techniques which may provide an insight in its use in insecticidal activity.

MATERIAL AND METHODS

Plant materials:

The *Saraca asoca* barks were collected in January 2014 from Karaikudi, Tamil Nadu from a single herb.

Preparation of extracts:

The collected *Saraca asoca* barks were washed several times with distilled water to remove the traces of impurities from the barks. The barks was dried at room temperature and coarsely powdered. The powder was extracted with methanol for 24 hours. A semi solid extract was obtained after complete elimination of alcohol under reduced pressure. The extract was stored in desiccator until used. The extract contained both polar and non-polar phytochemicals of the plant material used.

GC –MS analysis

GC-MS analysis was carried out on a GC clarus 500 Perkin Elmer system comprising a AOC-20i autosampler and gas chromatograph interfaced to a mass spectrometer instrument employing the following conditions: column Elite-1 fused silica capillary column (30 x 0.25mm ID x 1µMdf, composed of 100% Dimethyl polydioxane), operating in electron impact mode at 70eV; Helium gas (99.999%) was used as carrier gas at a constant flow of 1 ml /min and an injection volume of 0.5 µl was employed (split ratio of 10:1) injector temperature 250 °C; ion-source temperature 280 °C. The oven temperature was programmed from 110 °C (isothermal for 2 min), with an increase of 10 °C/min, to 200°C, then 5°C/min to 280°C, ending with a 9min isothermal at 280°C. Mass

spectra were taken at 70eV; a scan interval of 0.5 seconds and fragments from 40 to 450 Da. Total GC running time is 36min. min. The relative percentage amount of each component was calculated by comparing its average peak area to the total areas. Software adopted to handle mass spectra and chromatograms was a TurboMass Ver 5.2.0 (Srinivasan *et al.*, 2013).

RESULTS AND DISCUSSION

The invasion of food products by insects and moulds contribute greatly to the loss of quality and quantity. Chemicals and fumigants play a vital role in controlling this problem but they have been known to cause serious toxicological and environmental problems, with the consequent carcinogenic effect on man. The use of plants as an alternative in controlling insects is attracting attention from scientists' worldwide probably due to the non toxicity, affordability and availability of the products (Atta-ur-Rahman *et al.*, 1997). Plants are a rich source of secondary metabolites with interesting insecticidal activities.

Gas chromatography–mass spectrometry (GC-MS) is an analytical method that combines the features of gas-chromatography and mass spectrometry to identify different substances within a test sample. Applications of GC-MS include drug detection, fire investigation, environmental analysis, explosives investigation, inorganic, biochemistry and identification of unknown samples. Additionally, it can identify trace in materials that were previously thought to have disintegrated beyond identification. GC-MS has been widely heralded as a “gold standard” for forensic substance identification because it is used to perform a specific test. GC-MS instruments have been used for identification of hundreds of components that are present in natural and biological system (Ronald Hites, 1997).

Identification of components

Interpretation on mass spectrum GC-MS was conducted using the database of National Institute Standard and Technology (NIST) having more than 62,000 patterns. The spectrum of the unknown component was compared with the spectrum of the known components stored in the NIST library. The name, molecular weight and structure of the components of the test materials were ascertained. The biological activities listed (Table 2) are based on Dr.Duke's Phytochemical and Ethnobotanical Databases by Dr. Jim Duke of the Agricultural Research Service/USDA (Duke's, 2013). The nature and structure of the compounds were identified at different time intervals using mass spectrometer. The

heights of the different peaks indicate the relative concentration of the different components present in the sample. The finger prints of the compound which can be identified from NIST library database.

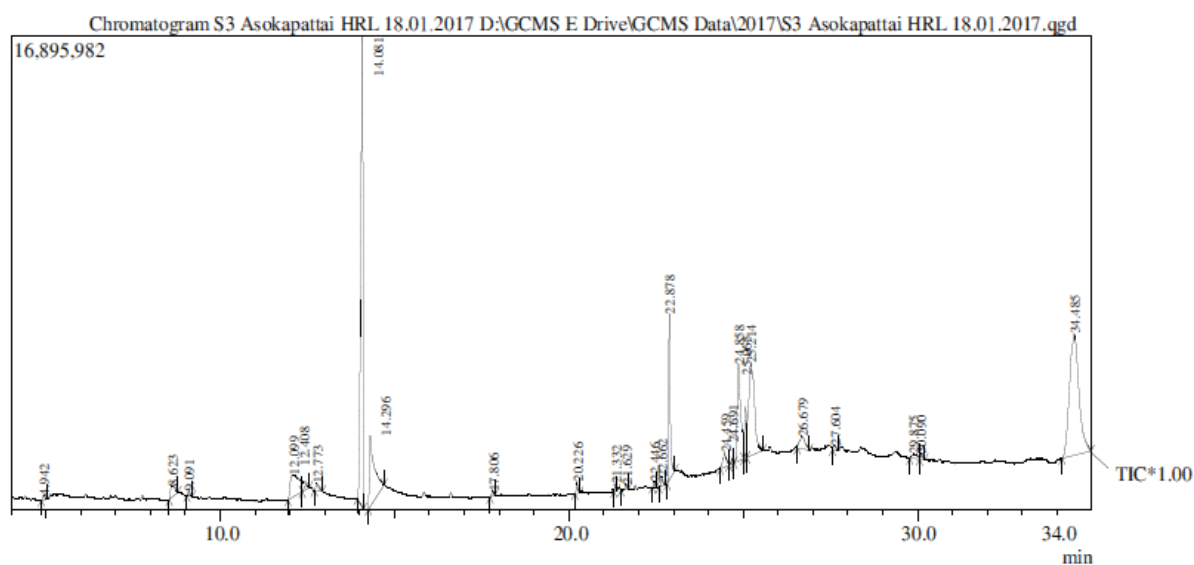
GC-MS analysis

Twenty five compounds were identified in *Saraca asoca* bark extract by GC-MS analysis. The active principles with their retention time (RT), molecular formula, molecular weight (MW) and concentration (%) are presented in (Table 1 and Fig 1). The prevailing compounds were 1-Butyl (dimethyl) silyloxypropane, 1,2,3-Benzenetriol, Squalene, Phenol, 3,4,5-trimethoxy, Hexadecanoic acid, methyl ester, Hexadecanoic acid, methyl ester, Stigmast-5-EN-3-OL, (3.Beta.) and 7-Methoxy-2,3,6-Triazaphenothiazin-

1(2H)-One present in the extract. The pharmacological activity of *Saraca asoca* represented in table 2. This study explores the goodness of the bark of the plant *Saraca asoca* which has a commendable sense of purpose and can be advised as a plant of phytopharmaceutical importance.

The investigation concluded that the stronger extraction capacity of methanol could have been produced number of active constituents responsible for many biological activities. So that those might be utilized for the development of traditional medicines and further investigation needs to elute novel active compounds from the medicinal plants which may be created a new way to treat insect.

Fig 1: GC MS chromatogram of *Saraca asoca* bark extract



Hexadecanoic acid, ethyl ester is recommended to be a saturated fatty acid and it might as act as an Antioxidant, hypocholesterolemic, anti androgenic, hemolytic and alpha reductase inhibitor (Sermakkani, 2012). Hexadecanoic acid has earlier been reported as a component in alcohol extract of the leaves of *Kigelia pinnata* (Grace *et al.*, 2002) and *Melissa officinalis* (Sharafzadeh *et al.*, 2011). Parasuraman *et al.* (2009) identified 17 compounds with n-Hexadecanoic acid and Octadecanoic acid as the major compounds in the leaves of *Cleistanthus collinus*. GC-MS analysis of ethyl acetate extract of *Goniothalamus umbrosus* revealed the presence of n-Hexadecanoic acid (Siddig Ibrahim *et al.*, 2009). Hexadecanoic acid, Phytol, 9, 12 - Octadecadienoic acid, 9, 12, 15-Octadecatrienoic acid and Squalene were Identified in the ethanol leaf extract of *Aloe vera* (Arunkumar and Muthuselvam, 2009) and *Vitex negundo* (Praveen kumar *et al.*, 2010). Squalene has earlier been reported as antimicrobial, antioxidant, anticancer, Neutralize

different xenobiotics, anti-inflammatory, anti-atherosclerotic and anti-neoplastic, role in skin aging and pathology and Adjuvant activities and cosmetics as a natural moisturizer (Ponnamma and Manjunath, 2012). Devi *et al.* (2009) reported that *Euphorbia longan* leaves mainly contained n-hexadecanoic acid and Octadecadienoic acid. These reports are in accordance with the result of this study.

Uraku (2015) investigated the Chemical Compositions of *Cymbopogon citrates* Leaves by Gas Chromatography-Mass Spectrometry (GC-MS) Method. Six compounds were identified in the methanol leaf extract and they include; hexadecanoic acid (8.11%), hepta-9,10,11-trienoic acid (17.43%), octadecanoic acid (8.41%), 2-ethenyltetradecan-1-ol (13.28%), eicosane aldehyde (37.56%) and 1-ethoxyoctadecane (15.20%) as the major chemical constituents.

Das and Sudhakar Swamy (2016) determined the bioactive compounds by GC-MS in fruit methanol extracts -a comparative analysis of three *Atalantia* species from south India. Twenty seven compounds

were identified from the mass spectra obtained. 1,3,4,5-Tetrahydroxycyclohexanecarboxylic acid was the major compound.

Table-1: GC-MS analysis revealed the presence of Phytochemical component in bark of *Saraca asoca*

S.No	R. Time	Area%	Molecular Formula	Name of the Chemical compound
1.	4.942	0.27	C ₉ H ₂₂ OS	1-Butyl(dimethyl)silyloxypropane
2.	8.623	1.12	C ₆ H ₆ O ₂	Catechol
3.	9.091	0.17	C ₇ H ₁₈ OSi	Ethyl(dimethyl)isopropoxysilane
4.	12.099	4.48	C ₆ H ₆ O ₃	1,2,3-Benzenetriol
5.	12.408	0.73	C ₁₂ H ₁₃ N ₇	3-[N'-(3H-Indol-3-ylmethylene)-hydrazino]-5-me
6.	12.773	0.46	C ₁₇ H ₂₀ O ₂	2-(4'-Methoxyphenyl)-2-(2'-methoxyphenyl)propa
7.	14.081	23.62	C ₈ H ₈ O ₃	Methyl 4-Hydroxybenzoate
8.	14.296	8.15	C ₈ H ₈ O ₃	Methyl 4-Hydroxybenzoate
9.	17.806	0.24	C ₉ H ₁₂ O ₄	Phenol, 3,4,5-trimethoxy-
10.	20.226	0.48	C ₁₄ H ₂₈ O ₂	Tetradecanoic acid
11.	21.332	0.22	C ₂₀ H ₃₈	2,6,10-Trimethyl,14-Ethylene-14-Pentadecne
12.	21.629	0.23	C ₁₅ H ₃₀ O ₂	Pentadecanoic acid
13.	22.446	0.19	C ₁₇ H ₃₄ O ₂	Hexadecanoic acid, methyl ester
14.	22.662	0.34	C ₁₅ H ₂₈ O ₂	2-Hydroxycyclopentadecanone
15.	22.878	6.03	C ₁₆ H ₃₂ O ₂	Hexadecanoic acid
16.	24.459	1.25	C ₂₀ H ₃₈ O ₂	Methyl 13-Nonadecenoate
17.	24.691	0.21	C ₁₉ H ₃₈ O ₂	Methyl stearate
18.	24.858	8.14	C ₁₆ H ₃₀ O	cis-9-Hexadecenal
19.	25.065	2.25	C ₁₈ H ₃₆ O ₂	Octadecanoic acid Stearic acid
20.	25.214	12.25	C ₃₀ H ₅₀	Squalene
21.	26.679	1.53	C ₂₉ H ₅₀ O	Stigmast-5-en-3-ol, (3.Beta.)-
22.	27.604	0.28	C ₁₈ H ₃₅ NO	9-Octadecenamide, (Z)-
23.	29.875	0.59	C ₂₉ H ₅₀ O ₂	Alpha-Tocopherol (Vitamin E)
24.	30.090	0.27	C ₁₅ H ₃₀ O	Pentadecanal
25.	34.485	26.47	C ₁₀ H ₈ N ₄ O ₂ S	7-Methoxy-2,3,6-Triazaphenothiazin-1(2H)-One

Table-2: GC-MS analysis revealed the presence of phytochemical component in bark of *Saraca asoca* and their biological activities

S.No	Compound name	Biological activity**
1.	Squalene	Antimicrobial, Pesticide , antioxidant, anticancer , Neutralize different xenobiotics, anti-inflammatory, anti-atherosclerotic and anti-neoplastic
2.	1,2,3-Benzenetriol	Antiseptic, Antioxidant, Antidermatitic, Fungicide Insecticide, Candidicide
3.	Phenol, 3,4,5-trimethoxy-	Antioxidant, anticarcinogenic, antiinflammatory, Insecticide
4.	Tetradecanoic acid	Antioxidant, cancer preventing, nematicide, Larvicidal and repellent activity
5.	Hexadecanoic acid, methyl ester	Act as lipid anchor in biomembranes, Anxiolytic. Antioxidant, hypocholesterolemic , Anti androgenic , hemolytic, Alpha reductase inhibitor. Pesticide ,
6.	Stigmast-5-en-3-OL, (3.Beta.)-	.Antihepatotoxic, Antiviral, Antioxidant, Cancer preventive, Hypocholesterolemic
7.	7-Methoxy-2,3,6-Triazaphenothiazin-1(2H)-One	Antimicrobial, Anti-inflammatory, Fungicide

**Source: Dr. Duke's phytochemical and ethnobotanical database (online database)

Uraku (2016) examined the Bioactive Constituents of Methanol Fraction of *Spilanthes uliginosa* (Sw) Leaves. The major phytochemicals identified in the leaf extract are hexadecanoic acid (8.68%), hepta-9, 10, 11-trienoic acid (19.36%), octadecenoic acid (8.14%), 5-hydroxymethyl heptadecane (14.02%), docosane aldehyde (41.72%) and 1-ethoxyoctadecane (8.08%).

CONCLUSION

The present study characterized the phytochemical profile of the *Saraca asoca* bark extract using GC-MS. The chromatogram shows the comparative concentration of different components getting eluted as a purpose of retention time. The heights of the different peaks indicates the relative concentration of the compounds exist in the methanol extract of *Saraca asoca* bark. The mass spectrometer analyses the compounds which were eluted at different time intervals to recognize the nature and structure of the compounds. These spectrum are finger print of the compound which can be identified from the NIST library. The identification of various bioactive compounds confirms the insecticidal application of *Saraca asoca* bark for a variety of insect. Further research is in progress for the evaluation of insecticidal activity in *Saraca asoca* bark.

REFERENCES

Arunkumar S and Muthuselvam M: 2009. Analysis of Phytochemical constituents and antimicrobial activities of Aloe vera L. against clinical pathogens. World J. Agricultural Sci., 5(5): 572-576.

Das AK, and Sudhakar Swamy. Antioxidant activity and determination of bioactive compounds by GC-MS in fruit methanol extracts -a comparative analysis of three *Atalantia* species from south India. Journal of Applied Pharmaceutical Science Vol. 6 (02), pp. 130-134, February, 2016.

de-Fátima A, Modolo LV, Conegero LS, Pilli RA, Ferreira CV, Kohn LK, de-Carvalho JE (2006). Lactones and their derivatives: biological activities, mechanisms of action and potential leads for drug design. Curr. Med. Chem. 13: 3371-3384.

Devi P, Nagarajan M, Christina AJM, Meera R and Merlin NJ: GC-MS analysis of Euphorbia longan leaves. Int. J. of Pharmaceutical Res and Development 2009; 8: 1-4.

Duke's. Phytochemical and Ethnobotanical Databases, Phytochemical and Ethnobotanical Databases. www.arsgov/cgi-bin/duke/. 2013.

Grace OM, Light ME, Lindsey KL, Moholland DA, Staden JV and Jader AK: Antibacterial activity and isolation of antibacterial compounds from fruit of the traditional African medicinal

Koduru S, Grierson DS, Afolayan AJ (2006). Antimicrobial activity of *Solanum aculeastrum*. Pharm. Biol. 44: 283-286.

Lim SY, M Meyer, RA Kjonas, SK Ghosh., Phytol-based novel adjuvants in vaccine formulation: 1. assessment of safety and efficacy during stimulation of humoral and cell-mediated immune responses. J Immune Based Ther Vaccines, 4:6, (2006).

Mathekaga AD, Meyer JJM (1998). Antibacterial activity of South African *Helichrysum* species. South Afr. J. Bot. 64: 293-295.

Meurer-Grimes B, Mcbeth DL, Hallihan B, Delph S (1996). Antimicrobial activity in medicinal plants of the Scrophulariaceae and Acanthaceae. Int. J. Pharmacognosy, 34: 243-248.

Parasuraman S, Raveendran R and Madhavrao C: GC-MS analysis of leaf extracts of *Cleistanthus collinus* Roxb. (Euphorbiaceae). Int. J. Ph. Sci 2009; 1(2):284-286.

Ponnamma S. U. and K. Manjunath. GC-MS Analysis Of Phytocomponents In The Methanolic Extract Of *Justicia Wynaadensis* (Nees) T. Anders. Int J Pharm Bio Sci 2012 July; 3(3): (P) 570 – 576.

Ronald Hites A. Gas Chromatography Mass Spectroscopy: Handbook of Instrumental Techniques for Analytical Chemistry, 1997. p. 609-611.

Sermakkani M, Thangapandian V, GC-MS Analysis of *Cassia Italica* leaf methanol extract,

Sermakkani M, Thangapandian V, GC-MS Analysis of *Cassia Italica* leaf methanol extract, *Asian Journal of Pharmaceutical and Clinical Research*, 5(2), 2012, 90-94.

Shahidi F (2000). Antioxidant factors in plant foods and selected oilseeds. BioFactors, 13: 179- 185.

Shahidi F, McDonald J, Chandrasekara A, Zhong Y (2008). Phytochemicals of foods, beverages and fruit vinegars: chemistry and health effects. Asia Pacific J. Clin. Nutr., 17: 380-382.

Sharafzadeh S, Morteza Khosh-Khui and Javidnia K: Aroma Profile of Leaf and Stem of Lemon Balm (*Melissa Officinalis* L.) Grown under Greenhouse Conditions. Advan. Environmental Biol 2011; 5(4): 547-550.

- Siddiq Ibrahim A, Ahmad Bustamam A, Manal Mohammed E, Syam MI Mohamed Yousif M, Abdelbasit Adam, Alhaj NA and Rasedee Abdullah: GC-MS determination of bioactive plant, *Kigelia africana*. *S.Afr.J.Bot* 2002; 68: 220-222.
- Srinivasan K, Sivasubramanian S and Kumaravel S. Phytochemical profiling and GC-MS study of *Adhatoda vasica* leaves. *int.J.Pharm.Bio.Sci.*, 5(1):714-720. (2013).
- Uraku A.J. Determination of Chemical Compositions of *Cymbopogon citrates* Leaves by Gas Chromatography-Mass Spectrometry (GC-MS) Method. *Research Journal of Phytochemistry* 9 (4): 175-187, 2015.
- Uraku A.J. GC/MS Determination of Bioactive Constituents of Methanol Fraction of *Spilanthes uliginosa* (Sw) Leaves. *Research Journal of Medicinal Plant* 10 (1): 42-54, 2016.
- Yi-Zeng Liang, Peishan Xie, and Kelvin Chan: Quality control of herbal medicines. *Journal of Chromatography* 2004; B.812. 53- 70. Atta-ur-Rahman, Choudhary MI, William, JT. *Bioassay techniques for drug development*. Harward Academic Publisher, 1997, pp 67-68.
- Dubey N. K., B. Srivastava, and A. Kumar, "Current status of plant products as botanical pesticides in storage pest management," *Journal of Biopesticide*, vol. 1, no. 2, pp. 182– 186, 2008.
- Talukder F. A., M. S. Islam, M. S. Hossain, M. A. Rahman, and M. N. Alam, "Toxicity effects of botanicals and synthetic insecticides on *Tribolium castaneum* (Herbst) and *Rhyzopertha dominica* (F.)," *Bangladesh Journal of Environment Science*, vol. 10, no. 2, pp. 365–371, 2004.

Source of support: Nil;

Conflict of interest: None declared